



Australian Government
Medicare Australia

PSI Applet

Programmers Guide

Release Date: September 2008

Online Technical Support: 1300 550 115
Email: pki@medicareaustralia.gov.au



Use of the Medicare Australia eSignature API Version V2.3.1 is subject to the terms of the
Medicare Australia eSignature API Licence Agreement.

Copyright © 2008- Medicare Australia - Canberra Australia

This product uses software from the **OpenSSL** and **SQLite** toolkits.

OpenSSL:

This product includes software developed by the OpenSSL Project for use in the OpenSSL Toolkit
(<http://www.openssl.org/>) Copyright (c) 1998-2002 The OpenSSL Project. All rights reserved.

This product includes cryptographic software written by Eric Young. (eay@cryptsoft.com)

SQLite:

This product includes software developed by Hwaci - Applied Software Research. (<http://www.sqlite.org/>)

This product was written by Dr. Richard Hipp (drh@hwaci.com) and is unrestricted open source.

Table of Contents

1 PREFACE	4
1.1 PURPOSE	4
1.2 AUDIENCE	4
2 INTRODUCTION	5
3 C/C++/DELPHI INTERFACE	5
3.1 HOW TO EMBED	5
3.2 HOW TO DETECT THE PSIAPPLET COMPLETION	6

1 Preface

1.1 Purpose

This manual describes how the PSI Applet can be incorporated into an application or called externally.

1.2 Audience

This manual is a technical document aimed at Information Technology Programmers who are developing or enhancing computer applications and want to incorporate the PSI Applet to their application

2 Introduction

PKI Certificate Manager has been provided to all Online Claiming software developers as a solution for storing and managing certificates. The PKI Certificate Manager provides end-users with a tool that can easily replace or update certificates. Once installed the PKI Certificate Manager is accessed via Windows Control Panel.

This document provides developers with sample codes on how to integrate the PSI Applet into their Practice Management Software. This Guide only applies to Practice Management Software using eSignature API v2.3.1.

3 C/C++/Delphi Interface

The Control Panel Application may be called from the C, C++ or Delphi application utilising Window's Shell extensions. In fact, this mechanism can be used to call any Control Panel Applet. There can only be one active PSI Applet at any time. This following piece of code will invoke the Control Panel Applet and make sure the **GUID** is defined as described:

3.1 How to embed

```
DEFINE_GUID(CLSID_Shell,0x13709620,0xc279,0x11ce,0xa4,0x9e,0x44,0x45,0x53,0x54,0x00,0x00);

/**
 * Call the Applet
 *
 */
CallApplet()
{
    IShellDispatch*    lpDisp;
    CString            cs;

    HRESULT hr = ::CoCreateInstance( CLSID_Shell, NULL,
                                     CLSCTX_INPROC_SERVER,
                                     IID_IShellDispatch,
                                     (LPVOID*)&lpDisp );

    cs.Format("psiapplet.cpl,,0,E");

    lpDisp->ControlPanelItem(cs.AllocSysString());
    lpDisp->Release();
}
```

Generally, the user should see the below screen, if there is no default store defined, the Control Panel will display the Default Store selection screen.

To detect if the control panel applet has completed, a system wide event is set by the **applet** to indicate completion, the event name is **PsiApplet**:

3.2 How to detect the PsiApplet completion

```

/**
 * Call the Applet
 *
 */
CallApplet ()
{
    IShellDispatch*      lpDisp;
    CString              cs;
    HANDLE                hEvent = OpenEvent (SYNCHRONIZE, FALSE,
                                             "PsiApplet");

    HRESULT hr = ::CoCreateInstance ( CLSID_Shell, NULL,
                                     CLSCTX_INPROC_SERVER,
                                     IID_IShellDispatch,
                                     (LPVOID*)&lpDisp );

    if (WaitForSingleObject (hEvent, 0) == WAIT_OBJECT_0) {
        cs.Format ("psiapplet.cpl,,0,E");
        lpDisp->ControlPanelItem (cs.AllocSysString ());
        lpDisp->Release ();
    }
}

```

The Control Panel Applet allows the user to change their password, register a token or even create a new store, for further information refer to the '*PKI Certificate Manager User Guide.pdf*'.

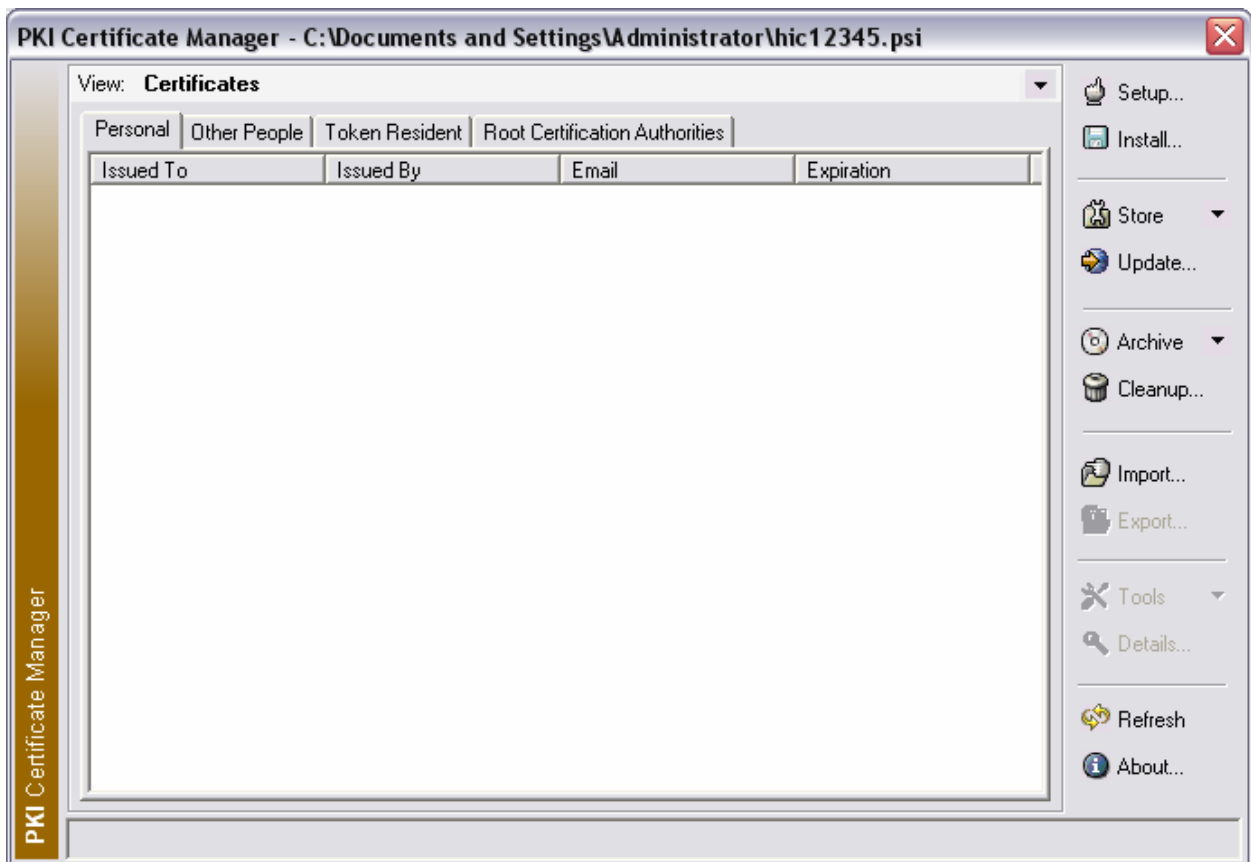


Figure 1: PKI Certificate Manager Main Screen