



For Windows 98 SE, Windows NT4, Windows ME, Windows 2000 and Windows XP

OUTLOOK 2003

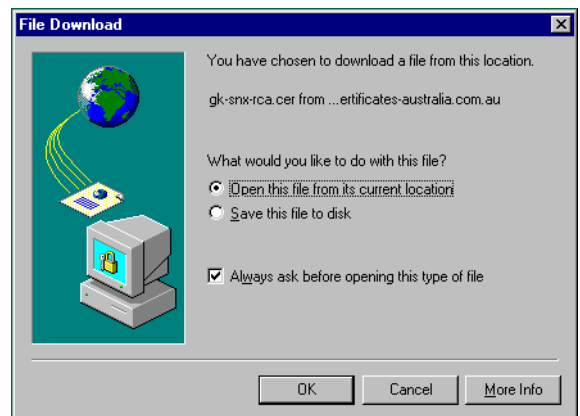
TRUSTING CERTIFICATES

Loading the SecureNet Root Certificate into the Microsoft Cryptographic Storage area

1. Establish a connection to the Internet. This will be either a Dial-up networking or LAN connection.
2. Open Internet Explorer.
3. Type <http://www.certificates-australia.com.au/> into the Address area of your web browser and press the Enter key. The Certificates Australia home page will then be displayed.

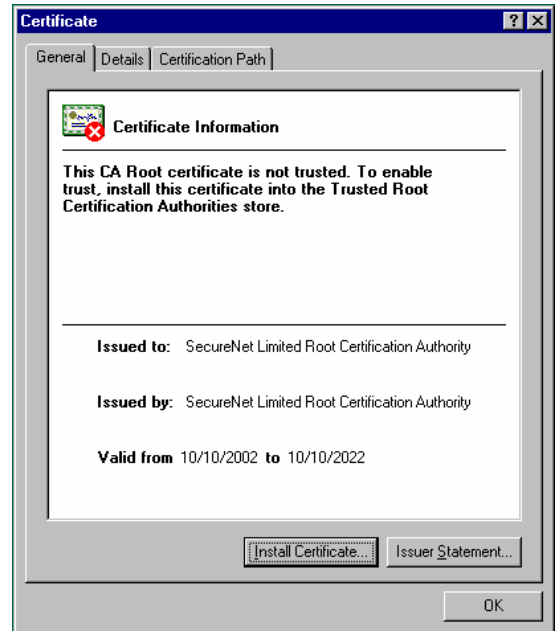


4. Select the link to '**SecureNet Root CA Certificate**' (which should be located near the top of the navigation menu).
5. Select the '**Open this file from its current location**' radio button and click '**OK**'.



6. If you receive a 'File Download' prompt asking if you wish to 'Open' or 'Save' the file, click '**Open**'.

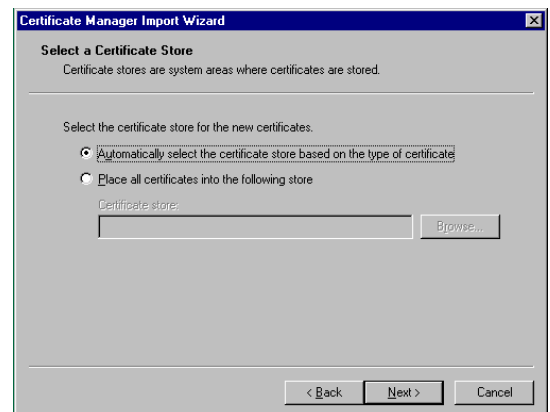
7. Click '**Install Certificate**'.



8. You will be presented with the 'Certificate Manager Import Wizard'. Click '**Next**'.



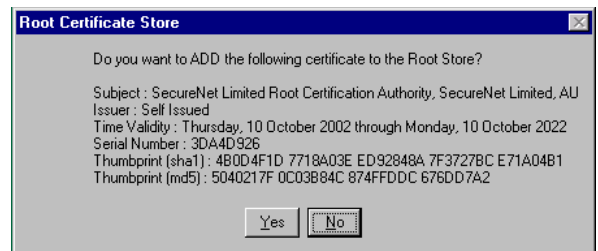
9. Ensure 'Automatically select the certificate store based on the type of certificate' is selected. Then click '**Next**'.



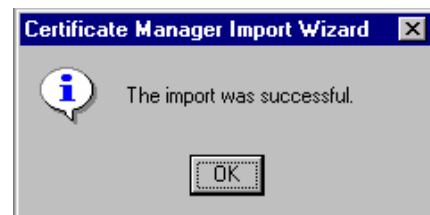
- The 'Trusted Root Certification Authorities' store should have been selected for the import. Click **'Finish'**.



- Confirm that you wish to import the certificate into the Root Store by clicking **'Yes'**.



- You should receive notification that the import was successful. Click **'OK'**.
- Click **'OK'** to close the Certificate Manager Import Wizard.



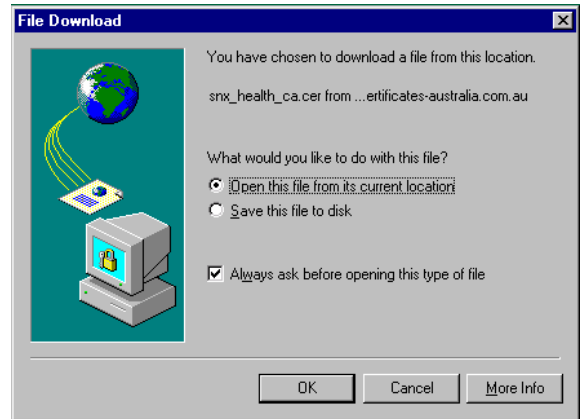
You just imported the SecureNet Root Certificate into the Microsoft Cryptographic Storage area. You must now install the SecureNet Health (intermediate) Certificate to complete the chain of trust.

Loading the SecureNet Health Certificate into the Microsoft Cryptographic Storage area

- Establish a connection to the Internet. This will be either a Dial-up networking or LAN connection.
- Open Internet Explorer.
- Type <http://www.certificates-australia.com.au/> into the Address area of your web browser and press the Enter key. The Certificates Australia home page will then be displayed.



17. Click the link to **'SecureNet Health CA Cert'** (which should be located towards the top of the navigation menu).
18. Select the **'Open this file from its current location'** radio button and click **'OK'**.



19. If you receive a 'File Download' prompt asking if you wish to 'Open' or 'Save' the file, click **'Open'**.

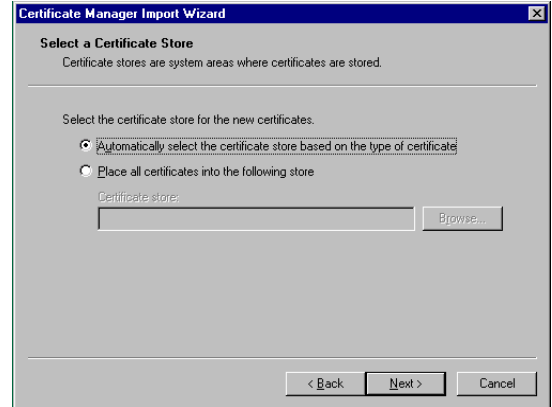
20. Click **'Install Certificate'**.



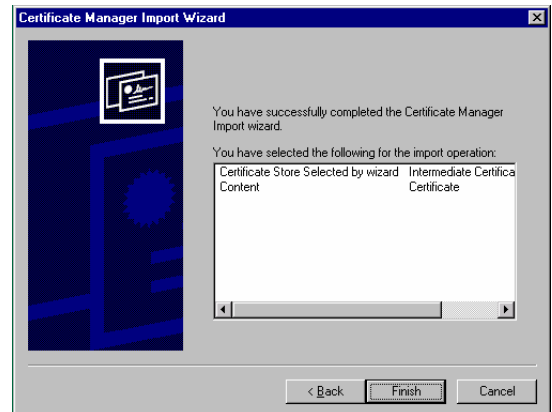
21. You will be presented with the 'Certificate Manager Import Wizard'. Click **'Next'**.



22. Ensure 'Automatically select the certificate store based on the type of certificate' is selected. Then click 'Next'.



23. The 'Intermediate Certification Authorities' store should have been selected for the import. Click 'Finish'.



24. You should receive notification that the import was successful. Click 'OK'.
25. Click 'OK' to close the Certificate Manager Import Wizard.



You just imported the SecureNet Health Certificate into the Microsoft Cryptographic Storage area.

You have now configured the chain of trust necessary to enable Microsoft applications to use SecureNet-issued HCI or HCL certificates.