



For Windows 98 SE, Windows NT4, Windows ME, Windows 2000 and Windows XP

OUTLOOK 2003 - LOADING CERTIFICATES

Loading HealthCare Individual Certificates from the iKey 2032 using Rainbow Technologies CIP Utilities

1. Ensure the application "Rainbow Technologies CIP Utilities" is installed on the PC.

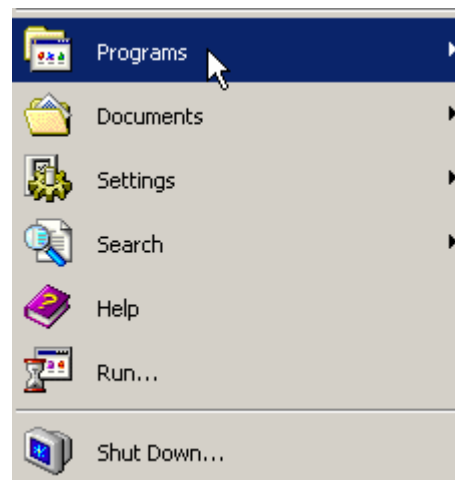
2. Insert your ikey into the Universal Serial Bus (USB) port of your computer or the USB extension cable plugged into your computer.



3. On Windows Start Bar select '**Start**' to display the Start Menu.



4. From the Start Menu select '**Programs**'. Under Windows XP, select '**All Programs**'.



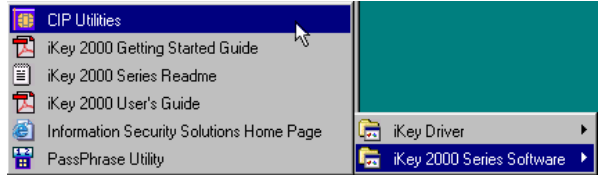
- From the Programs (or All Programs) menu select the '**Rainbow Technologies**' folder.



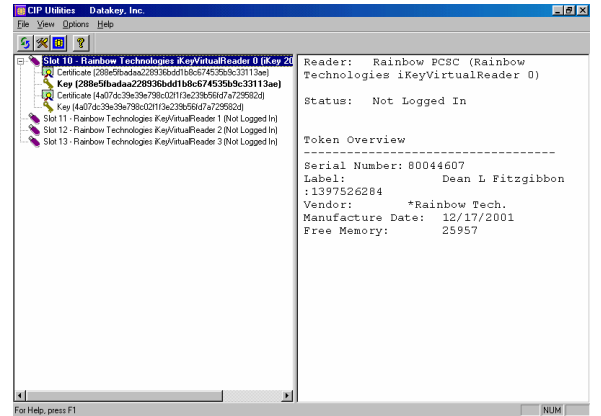
- From the Rainbow Technologies folder select the '**iKey 2000 Series Software**' folder.



- From the iKey 2000 Series Software folder select '**CIP Utilities**'.



- The CIP Utilities Application will now run.



- If both certificate icons show two ribbons the CIP Utility program has automatically detected and registered your certificate. You can skip to step 13.

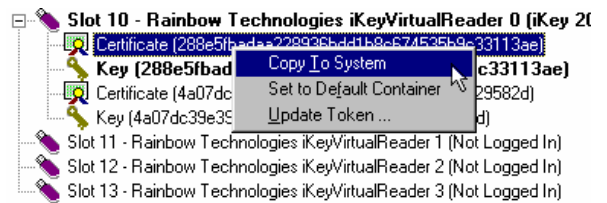


Certificates are on the token but not on the system



Certificates are on the token AND on the system

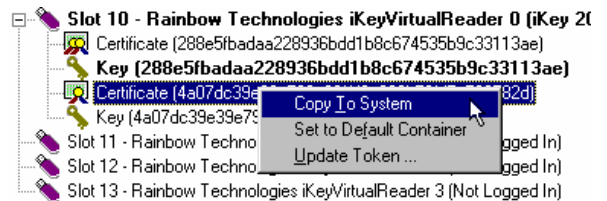
10. Right click on the first certificate and from the menu displayed select **'Copy to System'**



11. The certificate icon should change to display two ribbons



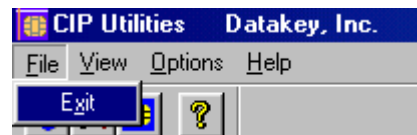
12. Repeat the process with the second certificate. Right click on it and from the menu displayed select **'Copy to System'**



13. Both certificate icons should now have two ribbons



14. Select **'File'** from the main menu then select **'Exit'**.



Congratulations, you have now registered your iKey for use with the Microsoft Cryptographic Storage area