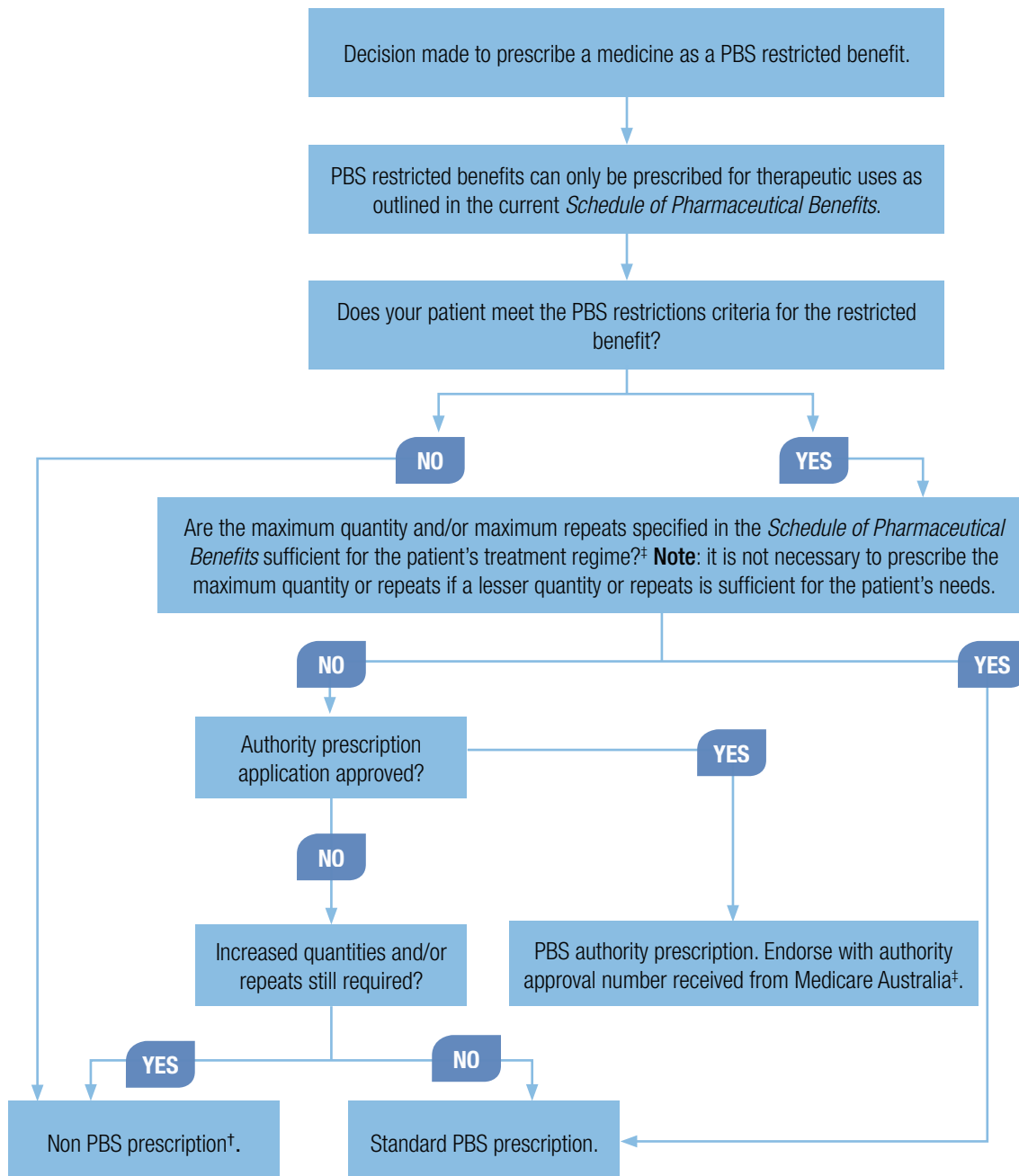




Quick reference guide

PBS restricted benefits

This quick reference guide explains the key Medicare Australia requirements for prescribing medicine as a PBS restricted benefit.



Quick reference guide

PBS restricted benefits

For more information

Online www.medicareaustralia.gov.au then **For health professionals**
www.pbs.gov.au to view the current *Schedule of Pharmaceutical Benefits*

Email medicare.prov@medicareaustralia.gov.au

Call **1800 888 333*** for PBS authority telephone applications (24 hour service)

Write **Reply paid no. 9857**
PBS Authority Section, Medicare Australia
GPO Box 9857
in your capital city

* Call charges apply from mobiles or pay phones only.

† Strike out the PBS/RBPS boxes if using PBS stationery. Endorse as non PBS.

‡ Increased quantities and/or repeats may not be allowed. Refer to our current *Schedule of Pharmaceutical Benefits*. Authority prescription approvals are subject to a number of additional criteria.