



# Quick reference guide

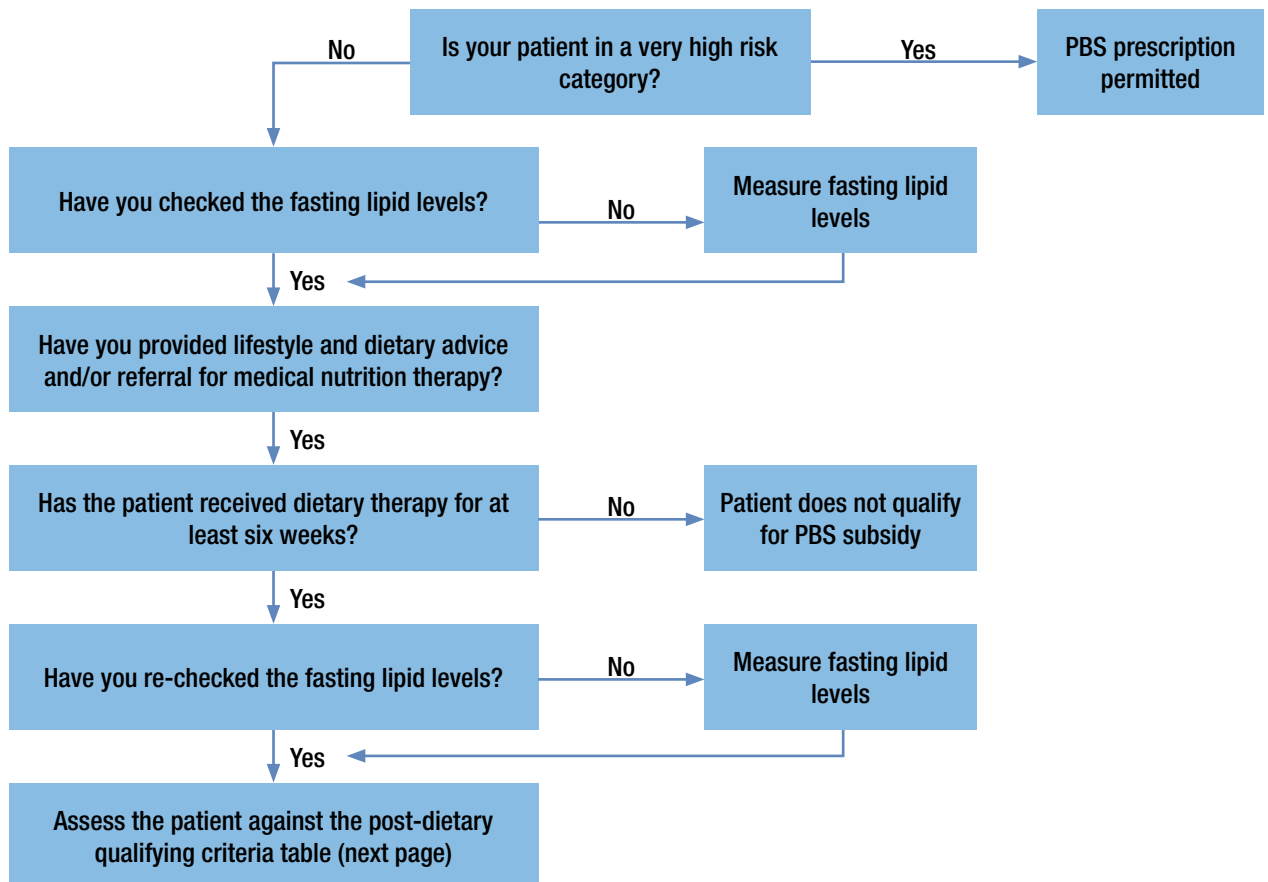
## Prescribing lipid-lowering medicine under the PBS

Lipid-lowering medicine is subsidised under the PBS as a restricted benefit item.

Prescribing criteria for the restricted item must be based on high risk factors and lipid levels. If prescribing lipid-lowering medicine outside the prescribing criteria listed in the Pharmaceutical Benefits Schedule, you must write a non PBS prescription.

The following will help you to decide whether your patient meets the prescribing criteria under the PBS. You should record how the patient meets each of these steps in the patient's notes.

For more information about prescribing criteria go to [www.pbs.gov.au](http://www.pbs.gov.au)



It is strongly recommended that you refer to the latest Pharmaceutical Benefits Schedule for full information about these medicines.

## Quick reference guide

### Prescribing lipid-lowering medicine under the PBS

#### Post-dietary qualifying criteria

Patient category	Lipid levels for PBS subsidy
Patients with diabetes mellitus not otherwise included.	Total cholesterol > 5.5 mmol/L.
<ul style="list-style-type: none"><li>Aboriginal or Torres Strait Islander patients.</li><li>Patients with hypertension.</li></ul>	Total cholesterol > 6.5 mmol/L <b>or</b> total cholesterol > 5.5 mmol/L <b>and</b> HDL cholesterol < 1 mmol/L.
Patients with HDL cholesterol < 1 mmol/L.	Total cholesterol > 6.5 mmol/L.
Patients with familial hypercholesterolaemia identified by: <ul style="list-style-type: none"><li>DNA mutation <b>or</b></li><li>tendon xanthomas in the patient or their first or second degree relative.</li></ul>	If aged 18 years or under at treatment initiation with: LDL cholesterol > 4 mmol/L.
Patients with: <ul style="list-style-type: none"><li>a family history of coronary heart disease which has become symptomatic before the age of 60 years in one or more first degree relatives <b>or</b></li><li>a family history of coronary heart disease which has become symptomatic before the age of 50 years in one or more second degree relatives.</li></ul>	If aged over 18 years at treatment initiation with: <ul style="list-style-type: none"><li>LDL cholesterol &gt; 5 mmol/L <b>or</b></li><li>total cholesterol &gt; 6.5 mmol/L <b>or</b></li><li>total cholesterol &gt; 5.5 mmol/L <b>and</b> HDL cholesterol &lt; 1 mmol/L.</li></ul>
Patients not eligible under the above: <ul style="list-style-type: none"><li>men aged 35 to 75 years</li><li>post-menopausal women aged up to 75 years.</li></ul>	Total cholesterol > 7.5 mmol/L <b>or</b> triglyceride > 4 mmol/L.
Patients not otherwise included.	Total cholesterol > 9 mmol/L <b>or</b> triglyceride > 8 mmol/L.

#### Important information

Medicare Australia recognises that you have the responsibility for choosing your patient's treatment. However, the PBS restriction criteria as stated in the Pharmaceutical Benefits Schedule is not discretionary. Matching the patient's condition with the PBS restriction is a mandatory requirement.

If your patient does not meet the PBS restriction criteria and you still want to prescribe the medicine, you must write a non PBS or private prescription. Endorse the prescription as 'non PBS' to make your intentions clear to the dispensing pharmacist. You can help your patient understand why their prescription is 'non PBS' by attaching a non PBS prescription sticky note. The sticky notes are supplied free of charge.

To download an order form go to [www.medicareaustralia.gov.au/education](http://www.medicareaustralia.gov.au/education)

#### For more information

Call General PBS and stationery enquiries 132 290\*  
PBS authority prescription approvals 1800 888 333\*\*

Online [www.pbs.gov.au](http://www.pbs.gov.au)

[www.medicareaustralia.gov.au/education](http://www.medicareaustralia.gov.au/education) to access other education resources.

\* Call charges apply.

\*\* Call charges apply from mobile and pay phones only.