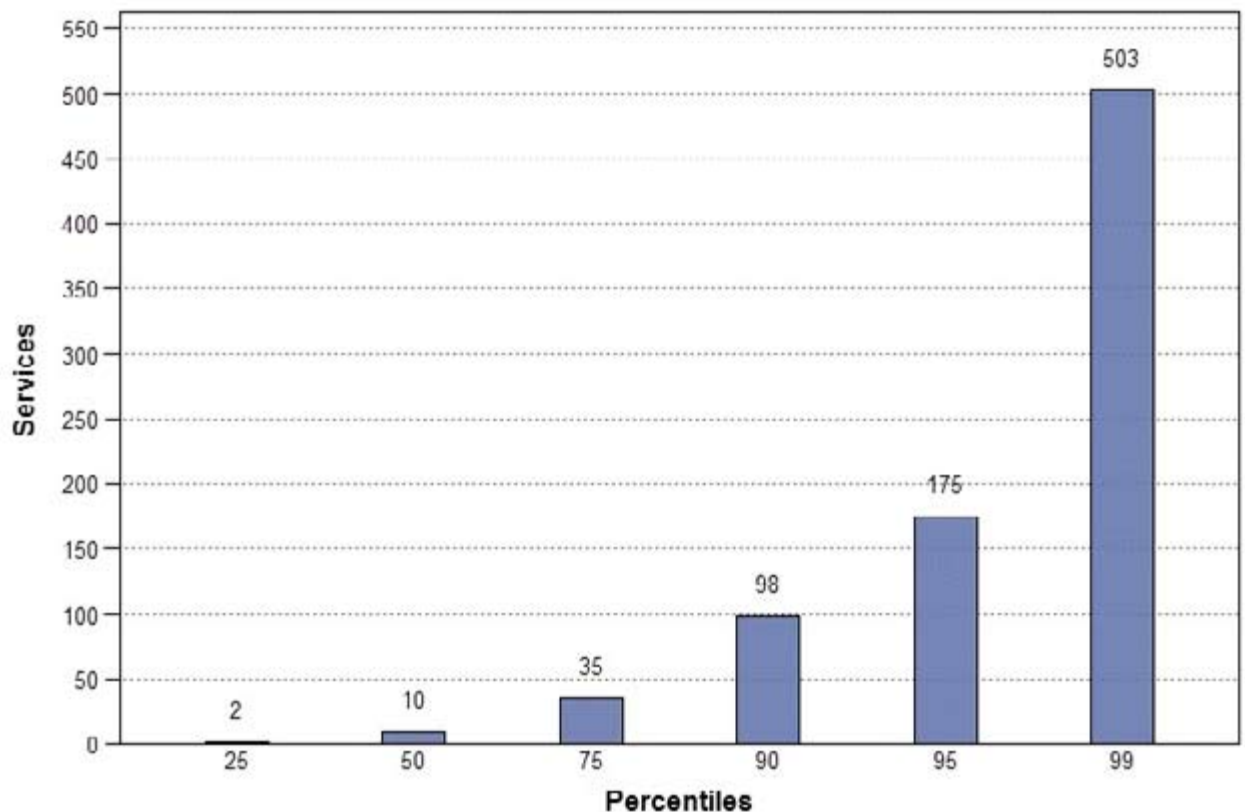




Percentiles—VRGP for level D

For the period from 1 July 2008–30 June 2009



Notes

- Level D items include: 44, 47, 48, 50, 51, 2507, 2509, 2525, 2526, 2558, 2559, 2577, 2578, 5060, 5063, 5064 and 5067.
- Statistics are based on relevant items rendered from 1 July 2008–30 June 2009.

Note: this is the date that Medicare Australia has processed the claim as opposed to the date the medical service was provided to the patient.

- Interpreting the report—in the chart above, if a provider has rendered 10 services then 50 per cent of providers have rendered fewer services and 50 per cent of providers have rendered more services. If a provider has rendered 175 services then at least 95 per cent of providers have rendered fewer services.
- For information about the charts email co.pr.help@medicareaustralia.gov.au
- Providers to be included in this report must also have had an aggregate schedule fee of at least \$1000 for each of the quarters during the time period.
- All providers eligible to render an item from an item category are considered when calculating percentiles, regardless of whether they rendered services for the item.

Percentiles—VRGP for level D

For the period from 1 July 2008–30 June 2009

General Caveats

- In addition to the specific provider peer group selection criteria, the percentiles are calculated by using services that are performed by a registered provider. Services that qualify for a Medicare benefit and have had a claim processed by Medicare Australia will also be calculated.
Note: this does not include services provided by hospital doctors to public patients in public hospitals or services that qualify for a benefit under the Department of Veterans' Affairs National Treatment Account.
- Percentiles represent the volume of services for which that percentage of providers render/request less than or equal to. For example, level C items for vocationally registered general practitioners (VRGP) where the number of services at percentile 90 is 965. This should be interpreted as '90 per cent of active VRGP rendered less than or equal to 965 level C items within the time period'.

Disclaimer

The information and data contained in the reports and tables have been provided by Medicare Australia for general information purposes only. While Medicare Australia takes care in the compilation and provision of the information and data, it does not assume or accept any liability for the accuracy, quality, suitability or currency of the information or data, or for any reliance on the information or data. Medicare Australia recommends that users exercise their own care, skill and diligence with respect to the use and interpretation of the information and data.

Alternate text for the graph

The graph is a histogram chart, where the x axis represents percentiles of provider population. The percentiles shown on the graph are 25th, 50th, 75th, 90th, 95th and 99th.

The 25th percentile means that 25 per cent of providers have rendered a number of services less than or equal to the number indicated on the graph. The y axis shows volumes of rendered level D services, ranging from 0–600 services.

The graph shows the following trend for the period 1 July 2008–30 June 2009:

- 25 per cent of providers have rendered less than or equal to two level D services. This means that 75 per cent of providers have rendered more than two level D services.
- 50 per cent of providers have rendered less than or equal to 10 level D services. This means that 50 per cent of providers have rendered more than 10 level D services.
- 75 per cent of providers have rendered less than or equal to 35 level D services. This means that 25 per cent of providers have rendered more than 35 level D services.
- 90 per cent of providers have rendered less than or equal to 98 level D services. This means that 10 per cent of providers have rendered more than 98 level D services.
- 95 per cent of providers have rendered less than or equal to 175 level D services. This means that only five per cent of providers have rendered more than 175 level D services.
- 99 per cent of providers have rendered less than or equal to 503 level D services. This means that only one per cent of providers have rendered more than 503 level D services.